



TEMPERATURE CONTROLLED HEATING MANTLES

First Step towards Sustainable Laboratories with
Energy Efficient Operations

CE CERTIFIED

PRECISION HEATING
FOR SAFER LAB WORK



TEMPERATURE CONTROLLED HEATING MANTLES

The GMC Series Heating Mantles are CE Certified for reliable and uniform heating in boiling, distillation, evaporation, and extraction processes. Designed to fit round-bottom flasks perfectly, they ensure safe, consistent performance, ideal for precise thermal applications in modern laboratories.

KEY FEATURES

01



Advanced LED Display

Clear view of time, temperature, and process status for seamless monitoring.

02



Precise Temperature

PT 100 external probe with auto-detection and integrated PID controller for high accuracy.

03



Built-in Safety

Spill detection with auto shutdown and safe temperature limits for secure operation.

04



User-Friendly Design

Safe, simple and seamless operation with an integrated retort rod holder for compact setups.

05



Built-in Calibration

Easy setup and built-in calibration ensure long-term accuracy and reliability.

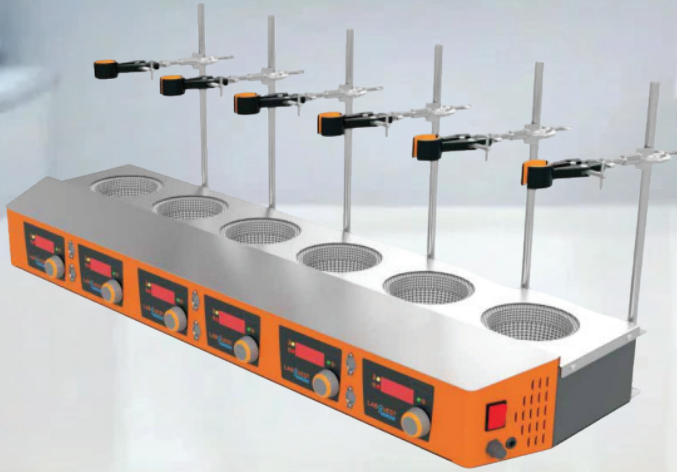
TECHNICAL DATA & ORDERING INFORMATION

Model Name	GMC250	GMC500	GMC010
Flask Capacity	250 ml	500 ml	1000 ml
Working Temperature Range	Ambient +5 °C to 350 °C		
Display Resolution	1°C		
Temperature Accuracy	1°C upto 100 °C		
Timer	upto 999 mins or continuous		
Power Requirements	1Å, 150W	1Å, 200W	1.5Å, 300W
Display	LED Display with Temperature, Time and Process Status		
Top Plate Material	MS		
Body Construction	MS		
Product Dimensions (L x B x H) mm	265 x 330 x 135		
Stage wise Heating Modes	Yes		
External Temperature Probe	PT 100		
CE Certification	YES		
HSN Code	84198990		
Ordering Code	BLFHGMC25000000000	BLFHGMC50000000000	BLFHGMC01000000000



Model Name	HMC020	HMC050	HMC011
Flask Capacity	2 L	5 L	10 L
Working Temperature Range	Ambient +5 °C to 350 °C		
Temperature Accuracy	1° C		
Timer	upto 999 mins or continuous		
Power Requirements	2.5 Å, 450 W	3 Å, 600 W	6 Å, 1200 W
Display	LED Display with Temperature, Time and Process Status		
Top Plate Material	SS		
Body Construction	MS		
Product Dimensions (L x B x H) mm	263 x 355 x 136	339 x 430 x 170	456 x 550 x 210
Stage wise Heating Modes	Yes		
External Temperature Probe	PT 100		
HSN Code	84198990		
Ordering Code	BLFHMC02000000000	BLFHMC50000000000	BLFHMC01100000000

MULTIPLY EFFICIENCY
MAINTAIN PRECISION



MULTIPOSITION MANTLES

Designed for high-throughput labs, our Multiposition Heating Mantles allow simultaneous, independent heating across multiple positions—perfect for experiments requiring varied temperature settings. With a snug fit for round-bottom flasks and consistent heat delivery, they streamline boiling, distillation, evaporation, and extraction processes without compromising control or safety.

Why Choose Multiposition Heating Mantles?

Smart & Safe

Set safe temperature limits and track reaction time with confidence.



Precision, Multiplied

Auto-detecting PT 100 probe delivers consistent control across all positions.



Space-Savvy Design

Integrated rod holder for neat, efficient setups—even in tight lab spaces.



Built for Safety

Protective fuse and cool-touch exterior ensure user protection at every step.



TECHNICAL DATA & ORDERING INFORMATION

Model Name	MPM062	MPM065
Heating Position	6	6
Max Flask Capacity	250 ml	500 ml
Power Consumption	1200 W	1450 W
Temperature Range	Ambient +5°C to 350°C	Ambient +5°C to 350°C
Temperature Control	PID & digital energy regulator	PID & digital energy regulator
Temperature feedback	Yes	Yes
Temperature Accuracy	1 °C	1 °C
Display Timer	0 - 999 min and Infinite	0 - 999 min and Infinite
Material of Construction	M.S Powder coated body with SS304 Top Plate	M.S Powder coated body with SS304 Top Plate
Unit Dimensions (L x B x H) mm	1000 x 330 x 135	1000 x 330 x 135
HSN Code	84198990	84198990
Ordering Code	BLFHMPM06200000000	BLFHMPM06500000000

ONE SOLUTION FOR
TWO CRITICAL NEEDS



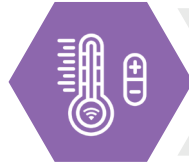
PRECISE HEATING AND STIRRING MANTLES

When your experiments demand both precise heat and controlled stirring, the Precision Stirring & Heating Mantle steps in as the all-in-one solution. Designed to support consistent reactions and prevent thermal inconsistencies, it ensures uniform results for complex lab processes like distillation, boiling, and extraction—without the hassle of separate equipment, all while prioritizing safety and accuracy in every experiment.



Dynamic Temperature Control

Fine-tune heating and stirring with real-time reaction tracking.



Accurate Temperature Regulation

PT 100 probe with auto-detection and integrated PID for precise control.



Smart Safety Features

Auto-spill shutdown, safe temperature limits, and protective fuse for reliable operation



Durable & Lab-Ready

Corrosion-resistant SS top, insulated cool-touch body, and grounded design.



High-Speed Stirring

Smooth mixing up to 2200 rpm—perfect for demanding reactions.



Effortless Calibration

Easy setup and built-in calibration ensure long-term accuracy and reliability.

TECHNICAL DATA & ORDERING INFORMATION

Model Name	PRM250	PRM500	PRM010	PRM020
Flask Capacity	250 ml	500 ml	1L	2 L
Working Temperature Range	Ambient +5 °C to 350°C			
Temperature Accuracy	1 °C			
Timer	upto 999 mins or continuous			
Stirring Speed	300 - 2200 rpm			
Power Requirements	1Å, 150W	1Å, 200W	1Å, 300W	2.5Å, 450W
Display	LED Display with Temperature, Time and Process Status			
Top Plate Material	SS			
Body Construction	SS			
Product Dimensions (L × B × H) mm	310 × 330 × 160	310 × 330 × 160	310 × 330 × 160	263 × 355 × 136
Stage wise Heating Modes	Yes			
External Temperature Probe	PT 100			
HSNCode	84198990			
Ordering Code	BLFHPRM 25000000000	BLFHPRM 50000000000	BLFHPRM 01000000000	BLFHPRM 02000000000

*PRM Capacities 5L & 10 L available on request

Visit Website



Connect with us
on LinkedIn



BOROSIL[®]
Scientific

1101, Crescenzo, G-Block, Opp. MCA Club,
Bandra Kurla Complex, Bandra (E), Mumbai - 400 051. India
T : +91 22 6740 6300 F : +91 22 6740 6514
E : borosil@borosil.com W : www.borosil.com

Pune Manufacturing Unit:
BOROSIL SCIENTIFIC LTD.
21-24, Plot No. 8, Indialand Global Industrial Park,
Hinjewadi Phase - 1, Pune - 411 057

Service Support:

✉ lab.support@borosil.com
☎ 1800-224-551